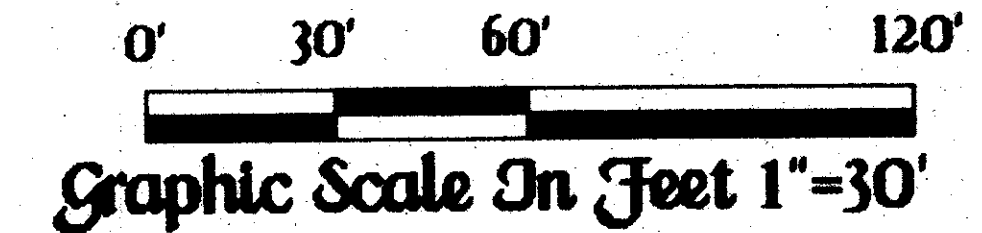
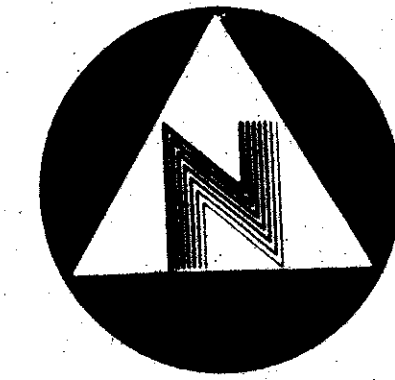


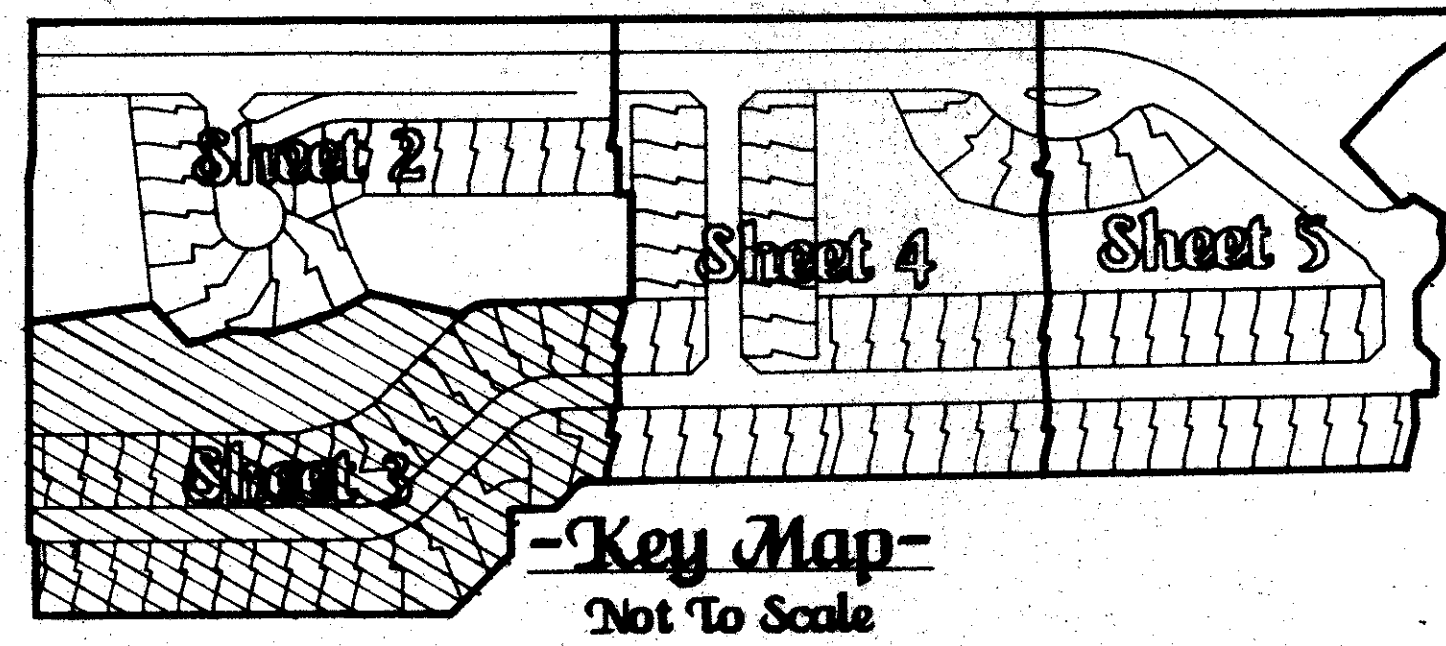
# -Brentwood Of Boca Phases 4 & 5-

January A.D., Nineteen Hundred Eighty Eight

Sheet Three Of Five



State Of Florida )  
County Of Palm Beach ) SS  
This Plat was filed for record  
at \_\_\_\_\_ this day  
of \_\_\_\_\_ A.D. 1988, and  
duly recorded in Plat Book  
\_\_\_\_\_ on Pages \_\_\_\_\_ through  
\_\_\_\_\_  
John B. Dunkle,  
Clerk of the Circuit Court.  
By  
Deputy Clerk



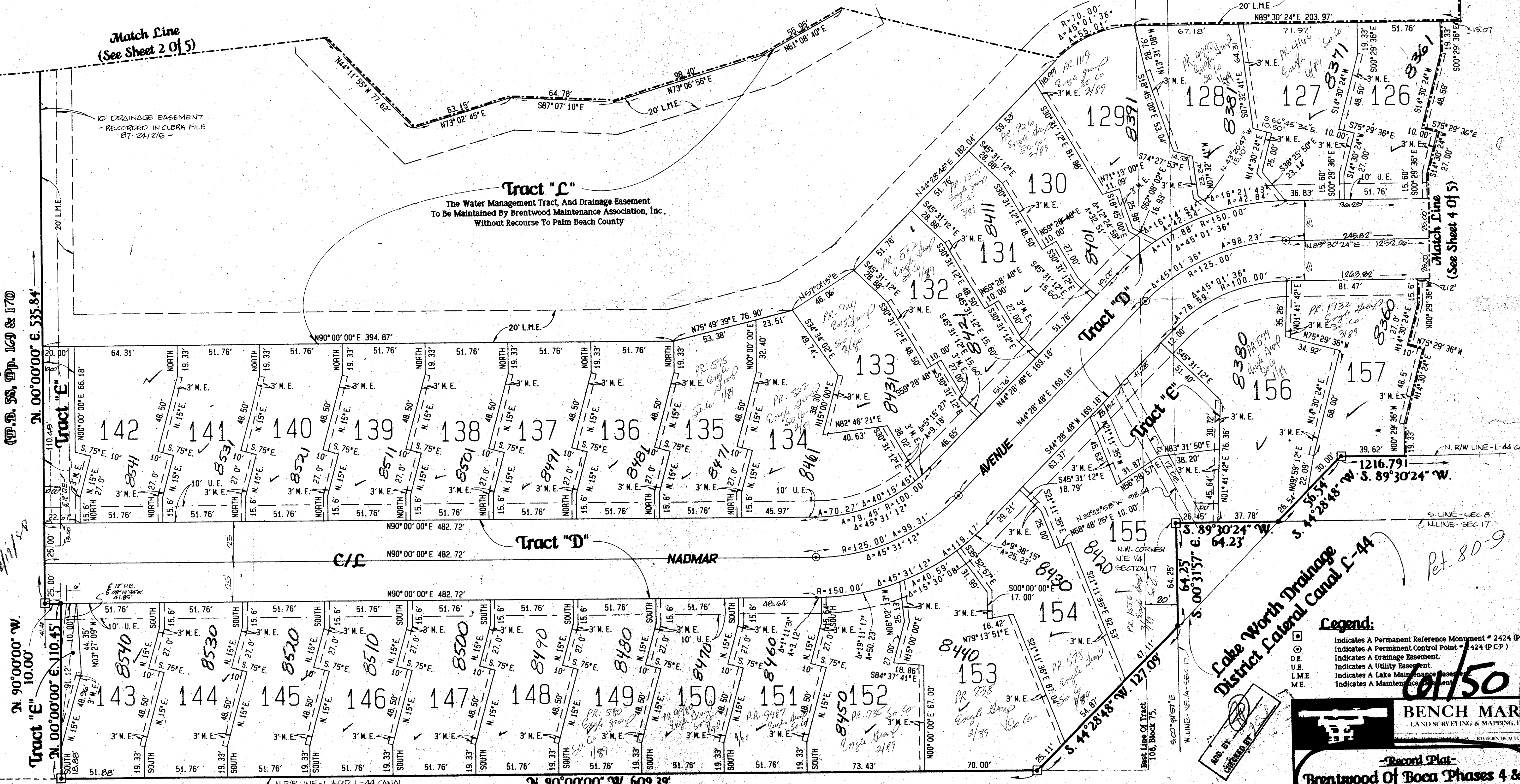
Palm Beach Farms Company Platted Road Right-Of-Way  
Abandoned As Per O.R.B. 5519, Pg. 1748

Match Line  
(See Sheet 2 Of 5)

Match Line  
(See Sheet 4 Of 5)

**Tract "L"**  
The Water Management Tract, And Drainage Easement  
To Be Maintained By Brentwood Maintenance Association, Inc.  
Without Recourse To Palm Beach County

Brentwood Of Boca Phase 3  
(P.B. 55, Pp. 169 & 170)



RM 80-9  
PAZ 771  
1/27/1989

- Legend:**
- Indicates A Permanent Reference Monument \* 2424 (P.R.M.)
  - Indicates A Permanent Control Point \* 424 (P.C.P.)
  - Indicates A Drainage Easement.
  - Indicates A Utility Easement.
  - Indicates A Lake Maintenance Easement.
  - Indicates A Maintenance Easement.

**150**

Lake Worth Drainage  
District Lateral Canal C-44

**BENCH MARK**  
LAND SURVEYING & MAPPING, INC.  
RIVIERA BEACH, FLORIDA

Lake Worth Drainage District Lateral Canal C-44  
(O.R.B. 1994 Pg. 1678)

This instrument was prepared by Wm. R. Van Campen, R.L.S., in  
and for the offices of Bench Mark Land Surveying & Mapping, Inc.,  
4152 W. Blue Heron Boulevard, Suite 121, Riviera Beach, FL.

SCALE	SIZE	FILE	DATE	NO.
				3 OF 5